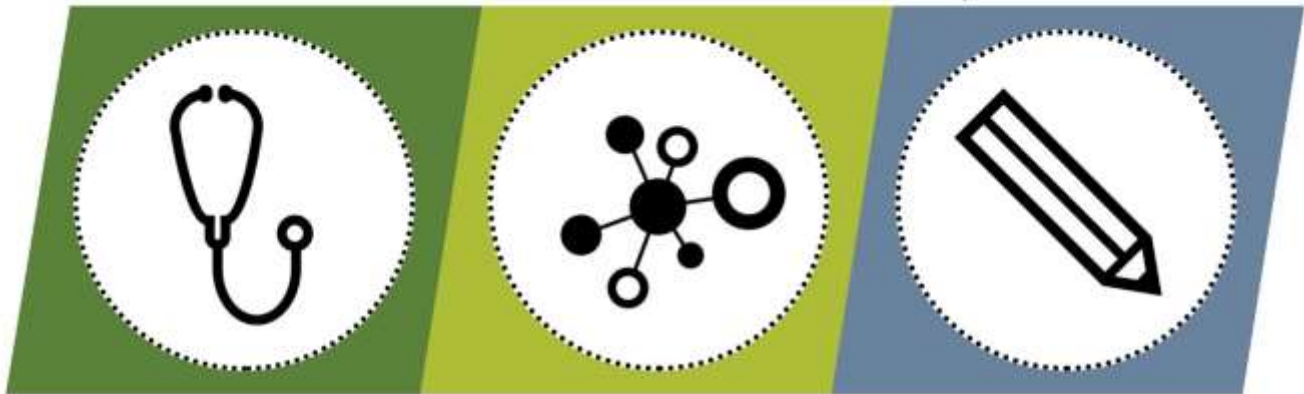


# KAFP Annual Meeting

Opportunities for Exhibitors & Supporters



**Connect. Interact. Learn.**

---

**Annual Meeting | June 6-8, 2019**  
**Wichita, Kansas**

The Kansas Academy of Family Physicians Annual Meeting is the CME highlight of the year for many Kansas family physicians. 180+ physicians attend each year to earn CME, network with physicians and medical professionals, and participate in KAFP business. Join in on the fun by supporting various aspects of the meetings and/or exhibiting at the conference.

**KAFP 2019 Annual Meeting**  
**June 6-8, 2019**

**Wichita Marriott, 9100 E Corporate Hills Dr, Wichita, KS 67207**  
Learn more: [www.kafponline.org](http://www.kafponline.org)

7570 W 21<sup>st</sup> St N, 1026 C, 104; Wichita, KS 67205  
[www.kafponline.org](http://www.kafponline.org) | P: 316-721-9005 | F: 316-721-9044

# Exhibitor Opportunities

KAFP invites your organization to exhibit and support the 2019 Annual Meeting in Wichita, Kansas. We anticipate 180+ family physicians and medical professionals from across the state will attend. Exhibit areas will be open Thursday and Friday, with multiple scheduled exhibit breaks each day. Thursday's Lunch will be a Networking & Exhibitor Showcase event located in the Atrium Exhibit Hall.

*Exhibitor Terms & Conditions outlined on page 6.*

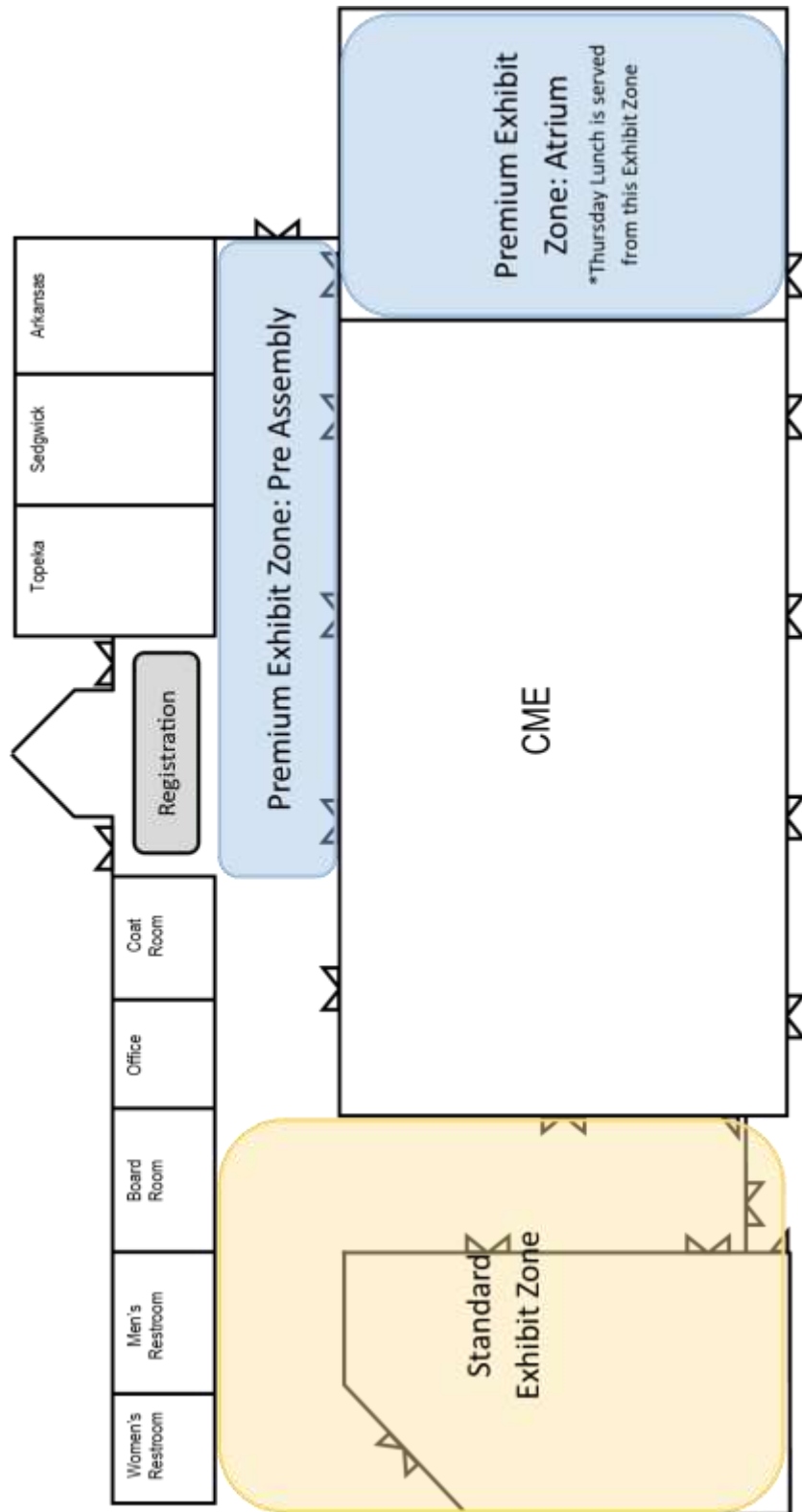
<b>PREMIUM</b>	<b>\$1,150</b>
Exhibitors at this level will be located in the Premium Exhibit Zone and have a choice of booth space in the Pre-Assembly area or Atrium. Thursday's Networking Lunch & Exhibitor Showcase will be in the Atrium.	
<b>STANDARD</b>	<b>\$950</b>
Exhibitors at this level will be assigned booth space in the Standard Exhibit Zone.	
<b>NON-PROFIT</b>	<b>\$650</b>
Non-Profit organizations submitting their 501(c)(3) designation are offered this reduced rate. Limited availability. KAFP assigns exhibit space in the Standard Exhibit Zone.	



## Exclusive Exhibitor Opportunities

<b>Registration Packet Insert, Exhibitors</b>	<b>\$99</b>
<b>Description:</b> Let the attendees know you're here by having your marketing piece included in the registration packets given to every attendee. >>Exhibitor only price! Regularly \$150.	
<b>Benefits:</b> Reach all attends. One single piece up to 8.5" x 11", provided by supporter. Commitment and 200 printed pieces due <b>May 1</b> .	
<b>Networking &amp; Exhibitor Showcase Lunch, Thursday</b>	<b>\$3,500</b>
<b>Description:</b> Exhibitors have asked for more time with attendees, and we delivered! Thursday's lunch will be served in the Exhibit Halls to give exhibitors and attendees more time to network. Attendees will be encouraged to eat-on-the-move and visit the exhibitors.	
<b>Benefits:</b> Complimentary standard exhibitor booth (\$950 value), signage on buffet tables and throughout Exhibit Halls, recognition in conference slide deck, first choice of standard exhibit booth space, two complimentary meals.	

# Exhibit Hall Map



Break food and beverages is available daily for attendees in each zone.

Thursday's Networking Lunch & Exhibitor Showcase is in the Atrium. Boxed lunches and limited seating is provided for attendees to encourage them to visit exhibitors.

# Supporter Opportunities

The KAFP Annual Meeting holds many opportunities for your organization to share your services and products with Kansas Family Physicians. Consider being a supporter in a variety of capacities. There is an option to fit every budget. Supporters who select opportunities totaling \$3,500 or more will receive a complimentary Standard Exhibit (\$950 value). If Premium Exhibit space is desired, the supporter is responsible for the \$200 difference.

Visit [kafponline.org/annualmeeting/](http://kafponline.org/annualmeeting/) for details regarding the Annual Meeting schedule!

Sponsorship opportunities marked with a \* are tax deductible through the KAFP-Foundation.

Promotion	<b>Nametag Lanyard</b> <span style="float: right;"><b>Available: 1</b> <b>\$900</b></span> <b>Description:</b> Your name and message printed on lanyards given to attendees for nametags. <b>Benefits:</b> Name printed on lanyards given to attendees. Commitment and artwork due <b>March 1</b> .
	<b>Tote Bag</b> <span style="float: right;"><b>Available: 4</b> <b>\$750</b></span> <b>Description:</b> Your name and message printed on lanyards given to attendees for nametags. <b>Benefits:</b> Name printed on lanyards given to attendees. Commitment and artwork due <b>March 1</b> .
	<b>Prize Drawings</b> <span style="float: right;"><b>Available: 4</b> <b>\$250</b></span> <b>Description:</b> Reward attendees for visiting exhibits by supporting prizes for attendees who visit every booth. KAFP will select prizes, taking supporter input into consideration. <b>Benefits:</b> Printed logo on Prize Drawing Card. Commitment and artwork due <b>May 1</b> .
	<b>Registration Packet Insert, Non-Exhibitors</b> <span style="float: right;"><b>Unlimited</b> <b>\$150</b></span> <b>Description:</b> Your flyer will be included in each registration packet. >>Special reduced rate of \$99 only for Exhibitors. <b>Benefits:</b> Reach all attendees. One single piece up to 8.5" x 11", provided by supporter. Commitment and 200 printed pieces due <b>May 1</b> .
Advertising	<b>Conference Manual Ad</b> <span style="float: right;"><b>Available: 6</b> <b>\$250</b></span> <b>Description:</b> Half-page ad space (4" x 5.5" or 5.5" x 4") in the digital Conference Manual shared with all Annual Meeting attendees. <b>Benefits:</b> Digital half-page ad space in Conference Manual PDF sent via e-mail to all attendees and available online. Commitment and artwork due <b>May 1</b> .
	<b>Meeting At-A-Glance Brochure Ad</b> <span style="float: right;"><b>Available: 4</b> <b>\$250</b></span> <b>Description:</b> 2.5" x 4" ad space available in the printed Meeting At-A-Glance brochure included in each attendee packet and available at registration desk. <b>Benefits:</b> Printed ad on 200 Meeting At-A-Glance brochures. Commitment and artwork due <b>May 1</b> .
Technology	<b>Wi-Fi</b> <span style="float: right;"><b>Available: 1</b> <b>\$2,000</b></span> <b>Description:</b> Be the official Wi-Fi supporter of the Annual Meeting! Your company name will be the meeting Wi-Fi password. <b>Benefits:</b> Recognition in conference slide deck, organization name included on all print materials relating to Wi-Fi log-in.
	<b>Audio Visual in CME Hall</b> <span style="float: right;"><b>Available: 3</b> <b>\$500</b></span> <b>Description:</b> A successful Annual Meeting isn't possible without audio visual technology! Show your support of CME by supporting this need. <b>Benefits:</b> Table top signage by projector, recognition in conference slide deck for that day.

Education	<b>Educational Grant</b>	<b>Unlimited</b>	<b>\$500+</b>
	<b>Description:</b> A grant of any amount is welcome to support continuing medical education (CME) expenses. <b>Benefits:</b> Recognition in conference slide deck, printed recognition if commitment received by <b>March 1</b> .		
	<b>Resident Presentations*</b>	<b>Available: 12</b>	<b>\$250</b>
<b>Description:</b> Support CME presentations given by family medicine residents. Resident presentations are scheduled during Saturday's CME sessions. <b>Benefits:</b> Tax deductible gift; recognition in conference slide deck, 2019 KAFP Foundation donor.			
	<b>Poster Presentations*</b>	<b>Available: 6</b>	<b>\$150</b>
<b>Description:</b> Sponsor awards given to medical students and residents who present research posters. <b>Benefits:</b> Tax deductible gift, recognition in conference slide deck, 2019 KAFP-Foundation donor.			
Activities	<b>Wine Tasting Fundraiser*</b>	<b>Available: 1</b>	<b>\$3,500</b>
	<b>Description:</b> Support KAFP-Foundation's annual Wine Tasting fundraiser. This event is attended by Academy and Foundation leaders, spouses, and guests. <b>Benefits:</b> Tax deductible gift, complimentary standard exhibitor booth (\$950 value), two complimentary tickets to event (\$150 value), verbal acknowledgement at event, 2019 KAFP-Foundation donor.		
	<b>Fun Run</b>	<b>Available: 2</b>	<b>\$750</b>
<b>Description:</b> Many attendees and their families join us Friday morning for the Fun Run! Participants receive a t-shirt and may run or walk the 5K course near the conference hotel. <b>Benefits:</b> Organization logo on Fun Run t-shirts, verbal acknowledgement during event. Commitment and artwork due <b>March 1</b> .			
Meals & Breaks	<b>Breakfast</b>	<b>Available: 2</b>	<b>\$1,500</b>
	<b>Description:</b> Start the day off right! Support breakfast on Friday or Saturday morning. <b>Benefits:</b> Table top signage, recognition in conference slide deck, two complimentary meals.		
	<b>Break Refreshments</b>	<b>Available: 6</b>	<b>\$700</b>
	<b>Description:</b> Help attendees recharge over their break by supporting snacks and beverages. <b>Benefits:</b> Table top signage, organization name included in print materials.		
	<b>Networking &amp; Exhibitor Showcase Lunch, Thursday</b>	<b>Available: 1</b>	<b>\$3,500</b>
	<b>Description:</b> Exhibitors have asked for more time with attendees, and we delivered! Thursday's lunch will be served in the Atrium. Boxed lunches and limited seating provided for attendees will encourage attendees to visit with exhibitors. <b>Benefits:</b> Complimentary standard exhibitor booth (\$950 value), signage on buffet tables and throughout Exhibit Halls, recognition in conference slide deck, and two complimentary meals.		
	<b>Lunch, Friday</b>	<b>Available: 1</b>	<b>\$3,500</b>
<b>Description:</b> This lunch, KAFP Awards & Business Meeting, brings in a large audience and is of high importance. <b>Benefits:</b> Complimentary standard exhibitor booth (\$950 value), verbal acknowledgement during lunch presentation, recognition in conference slide deck, two complimentary meals.			
<b>President's Reception</b>	<b>Available: 2</b>	<b>\$1,000</b>	
<b>Description:</b> The highlight of Friday evening is the President's Reception & Dinner. Over 200 guests enjoy this festive reception with cocktails and hors d'oeuvres. <b>Benefits:</b> Verbal acknowledgement during formal presentation, recognition in conference slide deck, organization name included in print materials.			
<b>President's Dinner</b>	<b>Available: 2</b>	<b>\$3,500</b>	
<b>Description:</b> Following the President's Reception, guests enjoy a formal dinner to honor incoming KAFP President and officers, and celebrate award winners. <b>Benefits:</b> Complimentary standard exhibitor booth (\$950 value), verbal acknowledgement and introduction of representatives during formal presentation, recognition in conference slide deck, organization name included in print materials, two complimentary tickets to the event (\$150 value).			

## Exhibitor Terms & Conditions

By participating as an exhibitor at the Kansas Academy of Family Physicians Annual Meeting (KAFP) you, your organization, and your representative(s) agree to the following terms and conditions:

**EXHIBITOR FEES:** Exhibit fees are: \$1,150 (premium), \$950 (standard), and \$650 (non-profit). Space is available on a first-come, first-served basis, determined by application and payment date.

**EXHIBIT FURNISHINGS:** Exhibits are furnished with an 8-foot skirted table, 2 chairs and table top sign. All booths must fit into the exhibit space without extending into walkways. See map for exhibit areas. Complimentary Wi-Fi in conference area/halls is provided.

**WHAT IS NOT INCLUDED IN EXHIBITOR FEE:** The exhibit fee does not include meals or admittance to conference sessions. The exhibitor fee does not include access to electrical/equipment services by the hotel. Exhibitors who wish to have electrical/equipment services are responsible for making those arrangements directly with the conference hotel prior to the event.

**EXHIBIT DISMANTLING:** Exhibits may only be dismantled after the last break on Friday. Tear-down before that time is strictly prohibited without permission from the exhibitor coordinator. Exhibits must be completely dismantled by 2:00 p.m. on Friday of the meeting.

**SPACE CANCELLATION:** All cancellations must be received in writing and are subject to a \$50 administrative fee. If notice of cancellation is received before **April 1**, exhibitor will receive a full refund. If notice of cancellation is received between **April 1** and **April 30**, exhibitor will receive a 50% refund. If notice of cancellation is received after April 30 there will be no refund.

**SUBLETTING SPACE:** Two or more organizations may not exhibit in the same single space.

**LIABILITY:** Exhibitor assumes responsibility and hereby agrees to protect, indemnify, defend and hold the Kansas Academy of Family Physicians and agents harmless against all claims, losses, and damages to persons or property, governmental charges or fines, and attorney fees arising out of or cause of exhibitors' installation, removal, maintenance, occupancy or use of the exhibitor premises or a part thereof. Exhibitor agrees that KAFP shall not be responsible for any exhibit items that are lost, stolen, damaged, or destroyed during the Conference, including setup or teardown. Under government order of emergency or other fair reasons beyond its control, KAFP reserves the right to cancel the exhibit with no further liability to the exhibitor than a refund of exhibit space payments made.

**SECURITY:** KAFP cannot guarantee exhibit security. Exhibitors assume all risk of loss or damage. Special arrangements for the security of valuables may be made directly with the conference hotel.

**PROMOTION:** KAFP shall promote exhibitors in appropriate meeting-related communications.

**ENDORSEMENTS:** Having an exhibitor relationship with KAFP does not imply the association's endorsement. The exhibitor shall not state, imply or represent in any manner that it is endorsed by KAFP.

**MAILING:** Exhibitors are responsible for making arrangements with the conference hotel regarding items shipped directly to the hotel. KAFP is not responsible for receiving or transporting of any such items.

Last Updated: November 2018

### Important Dates & Deadlines

**March 1** Deadline: Artwork for Nametag Lanyard & Tote Bag

**May 1** Deadline: Ad Commitment & Artwork

**June 6-8** Annual Meeting (Exhibit days are June 6-7 only)

**June 6** 9:00 – 11:00 a.m. Exhibitors Set Up

**June 7** 12:30 – 1:15 p.m. Networking Lunch & Exhibitor Showcase

**June 7** 12:00 – 2:00 p.m. Exhibitors Break Down

# 2018 Annual Meeting Supporters, Advertisers & Exhibitors

**Thank you** to the Supporters and Exhibitors from the 2018 Annual Meeting in Overland Park, KS. We hope to count on your continued support at the 2019 Annual Meeting in Wichita, KS.

## Supporters

- Aledade
- Blue Cross Blue Shield of Kansas
- Farmers Insurance
- KAMMCO
- KPPEPR (KS Patients & Providers Engaged in Prevention Research)
- KU ECHO
- KU School of Medicine, Office of the Executive Dean
- Olathe Health
- Overland Park Marriott Hotel
- Marley Drug
- United Methodist Health Ministry Fund
- Wichita Medical Research & Education Foundation
- Wichita Nephrology Group, P.A.
- Wichita Surgical Specialists, P.A.
- Wichita Urology Group

## Premium Exhibitors

- AbbVie-Metabolics
- American Academy of Family Physicians – Proficiency Testing
- Bayer U.S. Women’s Healthcare
- Exact Sciences Corporation
- Farmers Insurance
- Gilead Science
- Humana
- KAMMCO
- Kansas City Southwest Clinical Society
- Labette Health
- Novo Nordisk-Obesity
- SERC Physical Therapy
- Sunflower Health Plan
- UnitedHealthcare
- Western Plains Medical Complex
- Wichita Urology

## Standard & Non Profit Exhibitors

- Advanced & Preferred Physical Therapy
- Aledade
- American Board of Family Medicine (ABFM)
- Boehringer-Ingelheim
- Children’s Mercy Kansas City
- Community Health Center of Southeast Kansas
- Docs Who Care
- Epigenomics, Inc.
- GlaxoSmithKline
- GraceMed Health Clinic
- Great Plains Health Alliance
- Guadalupe Clinic
- Immunize Kansas Coalition
- Irwin Army Community Hospital
- Kansas Breastfeeding Coalition, Inc.
- KDHE, Immunizations
- KDHE, Bureau of Health Promotion
- KDHE, STI & HIV
- Kansas Foundation for Medical Care, Inc
- Kansas Health Information Network (KHIN)
- Kansas Recruitment & Retention Center
- Kowa Pharmaceuticals America
- KPPEPR KUMC
- KSU-KS Radon Program
- K-TRACS/KDHE
- KU ECHO
- KUMC: Office of Rural Medical Education
- KUMC: Office of the Executive Dean
- Lyme Association of Greater Kansas City, Inc
- Marley Drug
- Memorial Health System
- Merck
- Pfizer
- Salix Pharmaceuticals
- Sanofi
- The University of Kansas Health System
- Valley Hope

# Exhibitor & Supporter Registration



Company Name: \_\_\_\_\_  
 Contact Name: \_\_\_\_\_  
 Contact Email: \_\_\_\_\_ Contact Phone: \_\_\_\_\_  
 Address/City/Zip: \_\_\_\_\_  
 Request Letter of Intent:  Yes  No      Request a Receipt:  Yes  No

Exhibitor Opportunities		Total
Item		
<input type="checkbox"/> Premium, Pre-Assembly: \$1,150	<input type="checkbox"/> Premium, Atrium: \$1,150	
<input type="checkbox"/> Standard: \$950	<input type="checkbox"/> Non-Profit: \$650 (must submit IRS Designation letter)	

Name(s) of Exhibit Attendant(s): \_\_\_\_\_

If your company prefers not to exhibit next to a specific company, please list: \_\_\_\_\_

Supporter Opportunities			
Item	Available	Price	Total
Nametag Lanyard	1	\$900	
Tote Bag	4	\$750	
Prize Drawing	4	\$250	
Registration Packet Insert, Exhibitors	Unlimited	\$99	
Registration Packet Insert, Non-Exhibitors	Unlimited	\$150	
Conference Manual Ad	6	\$250	
Meeting At-A-Glance Brochure Ad	4	\$250	
Wi-Fi	1	\$2,000	
Audio Visual in CME Hall	3	\$500	
Educational Grant	Unlimited	\$500+	
Resident Presentations*	12	\$250	
Poster Presentations*	6	\$150	
Wine Tasting Fundraiser*	1	\$3,500	
Fun Run	2	\$750	
Breakfast	2	\$1,500	
Break Refreshments	6	\$700	
Networking & Exhibitor Showcase Lunch, Thursday	1	\$3,500	
Lunch, Friday	1	\$3,500	
President's Reception	2	\$1,000	
President's Dinner	2	\$3,500	

\*Tax-Deductible

Payment	
<input type="checkbox"/> <b>Check</b> , payable to Kansas Academy of Family Physicians. To be mailed with completed registration form.	
<input type="checkbox"/> <b>Credit Card</b> , charged the total amount above <input type="checkbox"/> VISA <input type="checkbox"/> MasterCard <input type="checkbox"/> Discover	
Card #: _____	Exp. Date: _____ / _____    CSV: _____
Billing Address: _____	
Cardholder Name: _____	
Signature: _____	

**How to Submit:**    ① Secure [online form](#).    ② Email: [msexarth@kafponline.org](mailto:msexarth@kafponline.org)    ③ Fax: 316-721-9044  
 ④ Mail: 7570 W 21<sup>st</sup> St. N, 1026 C, 104; Wichita, KS 67205